

*smart homes with
nature unlimited*



Mahavir's

Natura

T A L E G A O N

1 & 2 BHK Luxurious Flats

about Talegaon



TALEGAON is situated away from the city in a better environment than city on old Mumbai – Pune highway. Its geographical location is at a higher altitude than Lonawala from sea level. It is at 45 minutes drive from Pune station, 25 minutes drive from Hinjewadi, and 2 hours drive from Mumbai and is well connected by expressway, national highway, and railway. The proposed airport at Navi - Mumbai offers air connectivity as well.

Talegaon has excellent educational institutes of International standards. Also it has beautiful floriculture park developed by MIDC. A cool weather, pleasant atmosphere and fresh air prevails here throughout the year. It is believed to have best weather in Maharashtra. In other words Talegaon has got “*nature unlimited*”.

The industrial belt of PCMC, Maval, and Chakan and IT/BT park of Hinjewadi is at close distance from here. With the rapid pace at which Pune has grown recently, Talegaon is definitely the fast growing destination.

about Mahavir's Natura

Mahavir's NATURA is a painting on natural canvas, which has smart 2BHK and 1BHK apartments, and a shopping plaza.

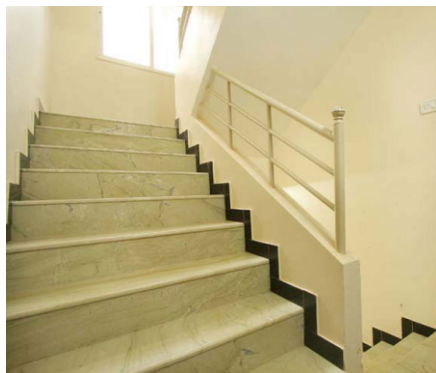
It is a perfect blend of nature and technology. Hi tech design with its world-class amenities makes it a very unique project. Its European style architecture is cherry on cake.

It has very good proximity to Mumbai, Pune city, Chakan & Talegaon Industrial area, Hinjewadi IT Park, PCMC and Talawade IT Park.

An elegant entrance gate, fully equipped gymnasium, well designed club house, well thought layout which optimizes natural light and fresh air, its eco friendly concept, world class amenities and beautiful landscape garden makes it your dream come true.



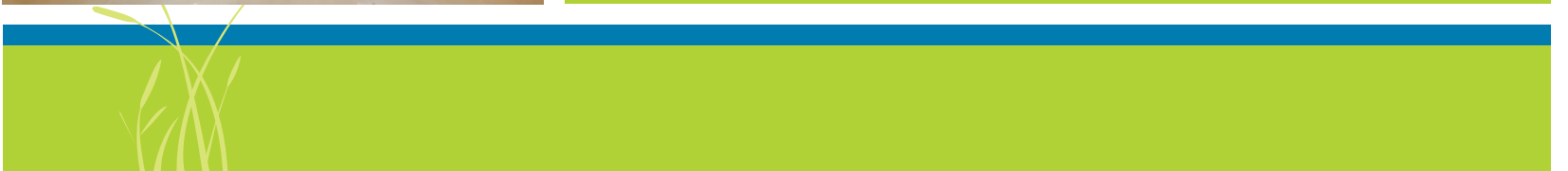
Mahavir's
NATURA
T A L E G A O N
1 & 2 BHK Luxurious Flats





spacia

2BHK Luxurious Apartments





Jade
Shopping complex



Shopping @ doorstep





ambria
1 BHK Luxurious Apartments



stream
1 BHK Luxurious Apartments



terrman
2 BHK Luxurious Apartments

actual photo

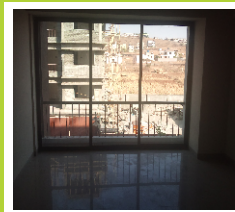
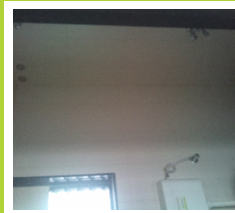
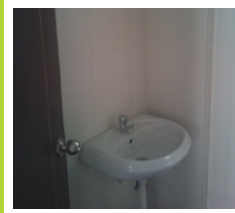




The Club

Luxurious Amenities.....

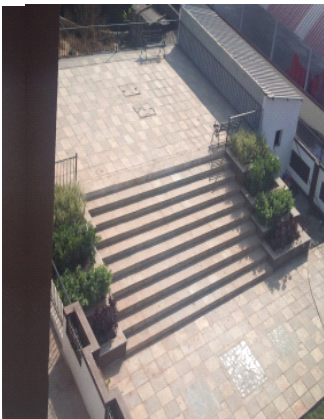
1. Designer landscape garden.
2. Natural water body.
3. Children's play area.
4. Party Hall.
5. Yoga and meditation.
6. Massage room.
7. Well-equipped gymnasium.
8. Indoor games viz.-Table tennis, Carom Board, Chess Board, Pool Table.
9. Swimming pool with water purification unit.
10. Softener and RO plant for Domestic Water need.
11. Generator back up for lift and common area.
12. Elegant Decorative Street lights.
13. RCC trimix concrete internal road.
14. Solar water heating system (for Ambia and Terrain).
15. Drip irrigation in garden and flowerbeds.
16. Rain water harvesting.
17. Sewage Treatment Plant.
18. Underground Water Storage tank of 250K liters.
19. Underground pipe lines for sewage, Sludge, rainwater and Electrical Cabling.
20. Waste management system.
21. Furnished society's office.
22. Well-equipped driver's waiting area.
23. Elegant entrance gate.
24. Well-equipped Security Cabin.
25. Shopping Center.



Superior Specifications

- **R.C.C. and Brick Work:**
R.C.C. frame structure with design in compliance of IS standards.
6" External and 4" Internal brick wall.
Double coated sand faced external plaster.
Internal wall finish in POP / Putty with skirting groove.
- **Flooring:**
24" x 24" vitrified tiled flooring in living, dining, kitchen and bedrooms.
12" x 12" anti - skid ceramic tiled flooring in toilets, terraces and dry balconies.
- **Doors**
Decorative Laminated main door. All doorframes in seasoned wood. All doors in ISI marked Flush door.
- **Windows**
Aluminum powder coated sliding windows.
Safety grill and a marble seal for all windows.
- **Toilets**
Designer glazed tiles dado up to 7' height in toilet of an apartments.
Sanitary ware of standard brands like Hindware, Parryware, CERA, SONA. Washbasin, hot and cold water mixture in each bathroom. Cabtree, Jaquar , Goldline or equivalent brand Bath fittings.
Plumbing and Electrical provision for Geyser.
- **Painting:**
Superior (OBD) paint for internal walls.
Water proof paint for external walls.
- **Plumbing:**
Ashirwad / Finolex / Kishan (ISI approved) concealed plumbing.
- **Kitchen**
8' x 27" kitchen platform with Black Granite top with ISI
Stainless steel sink. 4' wall tiles above platform.
- **Electrification**
Concealed POLYCAB or equivalent brand copper wiring.
MCB controls and Le'grand / Anchor or equivalent brand switches.
Wiring for inverter back up.
A/c point in all Bedrooms.
Provision for TV cable and Telephone in Living Room
- **Safety and Security**
Impressive Main Gate and Security Cabin.
Fire Hydrant System (for SPACIA building only)





actual photos....

Past Projects



White Pearl



Mahaveer Blessings



Swami Samartha Kripa



Mohaveer Enclave



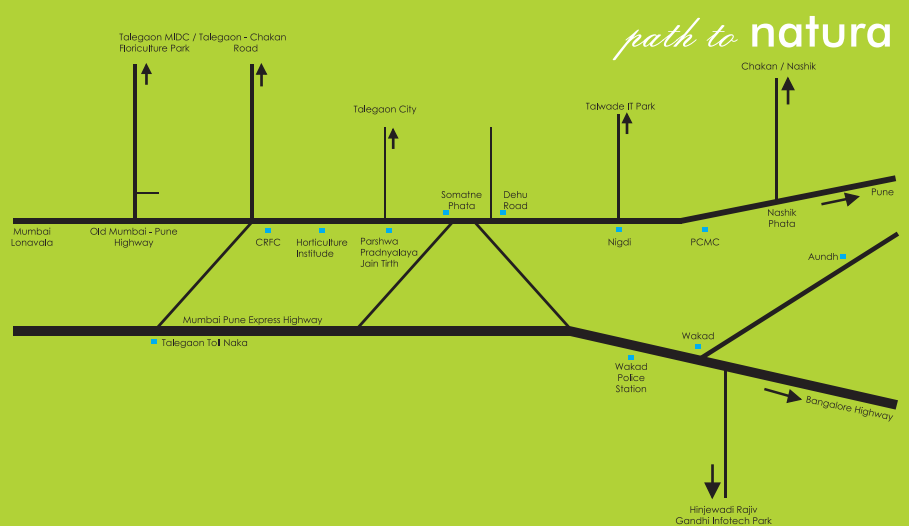
Mahaveer Sharan



Mahaveer Ashish

proximity to Key places

- Mumbai- 125 Km.
- Lonavala- 31 Km.
- Express Highway - 4 Km.
- Talegaon MIDC & Floriculture Park - 3 Km.
- Talegaon Railway Station - 2 Km.
- Parshwa Pradnalaya Jain Temple - 3 Km.
- Chakan MIDC - 23 Km.
- Nigdi - 15 Km.
- Pimpri -21 Km.
- Hinjewadi IT Park -20 Km.
- Talawade IT Park -22 Km.
- Pune City -35 Km.



Developers



MAS CREATIONS

Simply Creative

Office : 5&6, B-Wing, Ground Floor, Jai Ganesh Vision, Akurdi, Pune - 411035
Ph. : 020 4670 3164, Cell : 9766027771 / 7709333322 / 97666 22175

Site Address : S. No. -99, MIDC road,
Vadgaon, Taluka Maval, Dist - Pune. www.mascreations.org

Disclaimer:

"The content of this Brochure are purely conceptual and have no legal binding on us. The developers reserve the right to amend the content and specification without any prior notice. This Brochure supersedes all previous Brochures and presentations."